

# Stainless Steel Trolley Weighing Scale Base

Model : WS01T1010SF0500

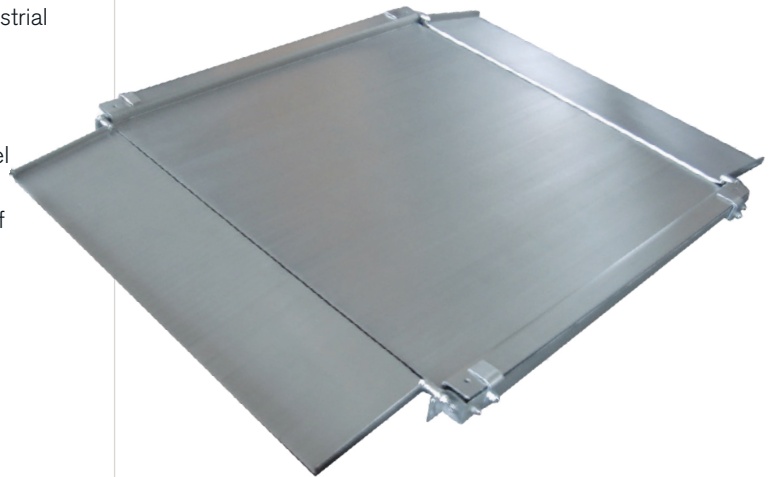
Robust industrial platform scale bases constructed from stainless steel. These heavy duty scale platforms feature foldable loading ramps for safe and efficient weighing, IP68 rated stainless steel load cells and are trade approved in New Zealand. The heavy duty frame is designed to be bolted in one fixed location.

## FEATURES

- legal for trade use (TS1505.5)
- trade approval applies when connected to an approved indicator
- maximum approved divisions 3000 d/range
- solid robust 304 stainless steel construction with polished finish
- IP68 protection rating
- heavy duty frame is designed to be bolted in one fixed location and provides additional robustness often required in industrial weighing applications
- low profile weighing platform (50 mm high)
- two foldable 500 mm long, on / off loading ramps
- 4 x 500 kg IP68 rated, hermetically sealed stainless steel load cells
- ideal for industrial applications requiring wheel on and off loading
- net weight 127 kg

## OPTIONS

- wall or desk mounted display options
- mild steel, IP-67 rated version available



## VARIATIONS

Model Number	Max Capacity	Graduation	Platform Size (mm)	Overall Dimensions (mm)
WS01T1010SF05000300	300 kg	0.1 kg	1,000 (W) x 1,000 (D)	1,090 (W) x 1,040 (D) + ramps
WS01T1010SF05000600	600 kg	0.2 kg	1,000 (W) x 1,000 (D)	1,090 (W) x 1,040 (D) + ramps

## WEIGHING SCALES