

Low Profile Scale Base

Model : WS004SBHC Series

This heavy duty scale base features a dual frame and impact protection system making it ideal for heavy industrial weighing applications. This industrial scale platform can be installed in-ground (pit mounting).

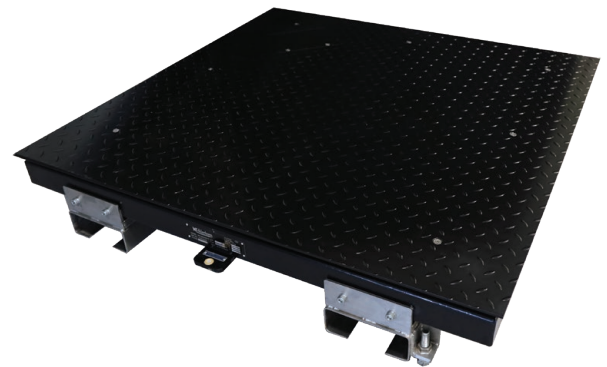
FEATURES

WS004SBHC

- legal for trade use (TS1505.5)
- trade approval applies when connected to an approved indicator
- maximum approved divisions 3000 d/range
- heavy duty dual frame system
- impact protection system
 - shock loading protection for horizontal force
 - up-lift protection - guards against separation
 - ball mounted floating deck - side protection
 - 4 x IP67 nickel plated load sensors
- ideal for heavy industrial applications
- ideal for forklift loading
- 6mm checker plate surface
- suitable for in-ground installation

OPTIONS

- forklift channels (part code # WS004SSFC)
- freestanding display pole (part code # WS004FSPOLE)
- stainless steel model available (model # WS004SBHCSS)



Optional Forklift Channels



Cross section of the double frame with a ball mounted floating deck for impact protection.

VARIATIONS

Model Number	Max Capacity	Graduation	Platform Size (mm)	Overall Dimensions (mm)
WS004SBHC1.5T	1,500 kg	0.5 kg	1,200 (W) x 1,200 (D)	1,200 (W) x 1,200 (D) x 110 (H)
WS004SBHC003T	3,000 kg	1 kg	1,200 (W) x 1,200 (D)	1,200 (W) x 1,200 (D) x 110 (H)

Specifications may change without notice