

Wheelchair Scale - Portable

Model : WM502

Portable wheelchair scale with 300 kg capacity and BMI function. Integrated ramps on both ends allows for easy on and off access. This scale is ideal for hospitals, retirement homes and medical clinics where portability is required or where there is limited space.

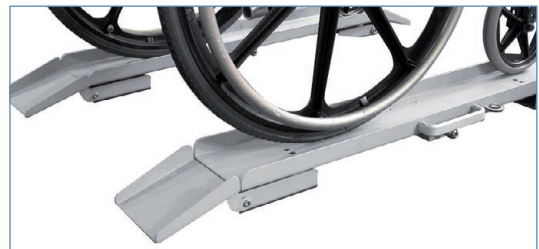
FEATURES

WM502

- compatible with most wheelchairs, easily transported and ideal for home visits
- heavy duty and durable unit with high capacity
- low angle ramps provide easy on-off access
- indicator can be placed on a desk or wall mounted
- easy to read 25 mm high LCD digital display
- improves weighing accuracy for unsteady or shaking patients
- tare function to subtract the weight of wheelchairs and patient's belongings
- improves record keeping by displaying the patient weight after they have left the scale
- Body Mass Index (BMI) function
- AC power adaptor or alkaline batteries (6 x AA [not included])
- New Zealand Register of Medical Devices (WAND) # 101129-WAND-6A43QP
- Australian Register of Therapeutic Goods (ARTG) # 174863
- net weight 19 kg

OPTIONS

carry case (Part Code # WM502CB)



Low angle ramps, easy-on, easy-off access



Image shows optional carry bags



VARIATIONS

Model Number	Max Capacity	Graduation	Platform Size (mm)	Overall Dimensions (mm)*
WM502	300 kg	100 g	130 (W) x 920 (L)	170 (W) x 1180 (L) x 75 (H)

* Note, beam dimensions are for a single beam and include the ramp and handle

Specifications may change without notice

▲ Weighing Scales.

Weighing Scales. Packaging Equipment. Labelling Equipment.
Labels. Food Equipment. POS Solutions. Maintenance & Repairs.

ORDER CODES FOR OPTIONS & SPARE PARTS

Order Code	Description
RD5685	9 V Power Adaptor
WM502CB	Carry Case

SPECIFICATIONS

Legal for Trade Use	No
Scale Type	Floor
Type of Display	Digital LCD
Units of Measure	kg
BMI Function	Yes
Full Body Composition Analysis	No
Height Measuring Built-in	No
Height Measuring Capable	No
Built-in Printer	No
Built-in Hand Rail	No
Wheelchair Accessible	Yes
WAND Registered	Yes
TIGMON Weight Management Software Compatible	No
Power	Batteries (6 x AA) Mains Power
Environment Suitability	Dry
Comm Ports	No



Specifications may change without notice