

PC Based Mid Speed In-Line Weigh Labeller - Cassette

Model : TSLI700DTC

Increase your throughput with the LI700DTC mid speed in line weigh labeller. With PC touch screen operation, quick change cassette style labeller, single framed compact design and operating speed up to 65 ppm it offers a cost effective solution for almost all food weigh price labelling requirements.

FEATURES

TSLI700DTC

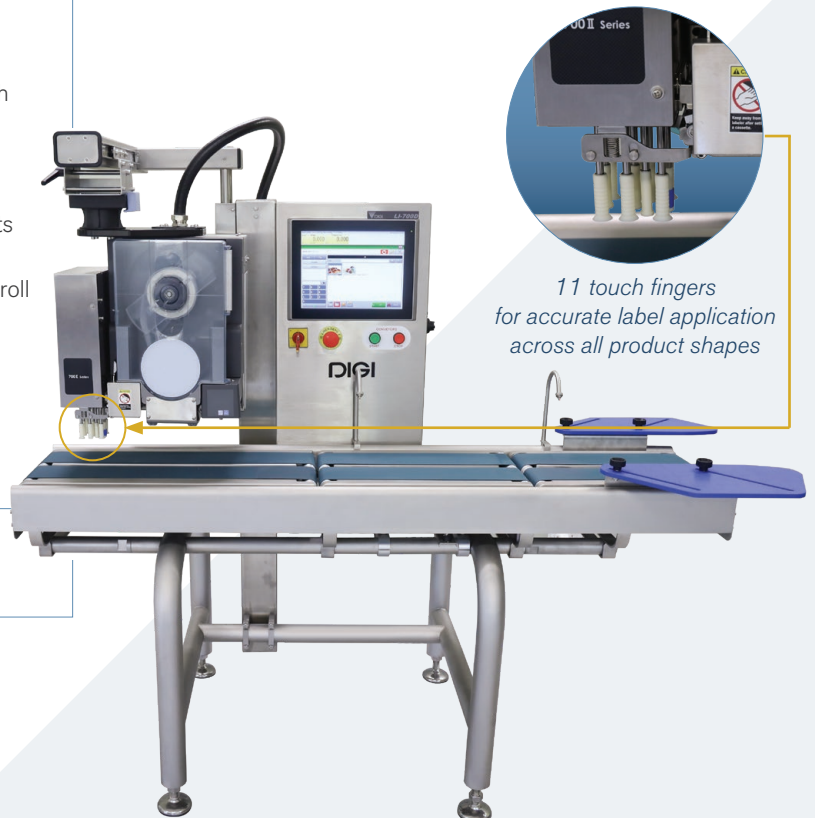
- legal for trade use (MCA # 2075)
- ability to provide Random Weight, A.Q.S or E mark and fixed weight operation
- user friendly, full colour TFT touch screen display
- quick change Top Cassette Style labeller, reliable and cost effective suitable for inside or outside wound labels
- unique Cassette ID to ensure correct labels are loaded for selected product
- printing by 80 mm wide 300 dpi thermal head providing high print resolution and TrueType Windows print fonts
- modular 304 stainless steel open frame design conveyor, enhanced ease of cleaning and hygiene
- under/over setpoint linked to label print on in-range products (selectable for each PLU)
- on board help screens & videos include programming, label roll changes, maintenance and fault finding
- Windows 10 embedded, 40 GB hard drive, 2 GB RAM, Intel Bay Trail N2930
- USB memory back up

SPECIFICATIONS

Capacities: 6 kg x 1 g
 10 kg x 2 g

OPTIONS

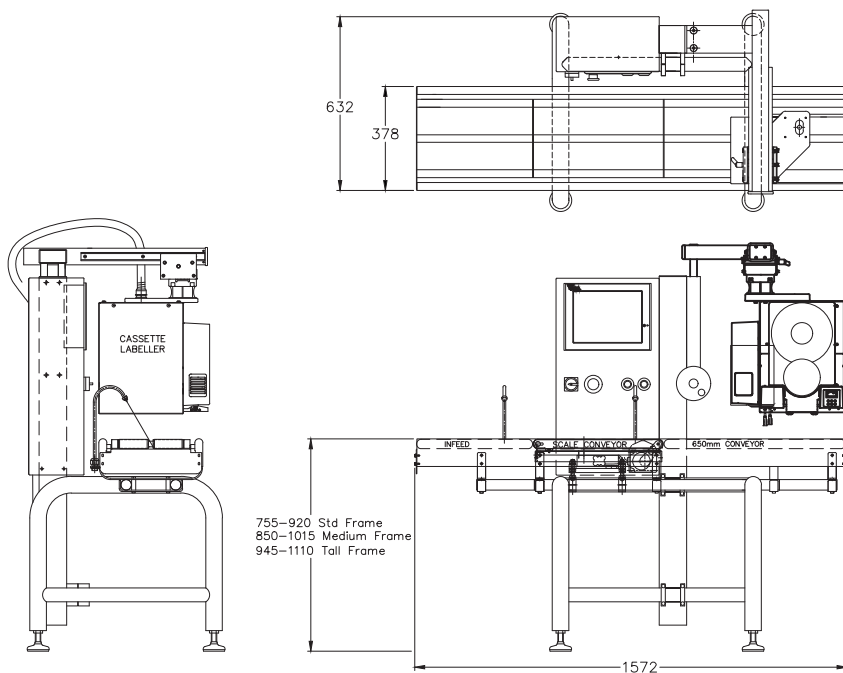
- interchangeable V deck conveyors for round shaped products
- long scale conveyor versions for items up to 475 mm in length
- single or twin sweep arm rejectors
- cassette bottom labeller



Specifications may change without notice

SPECIFICATIONS

Weighing Capacities	6 kg x 1 g 10 kg x 2 g
Package Size (mm)	Width: 40 - 250 Length: 80 - 300 Height: 180 (maximum)
Label Size (mm) - Top Label	Minimum: 40 (W) x 28 (H) Maximum: 80 (W) x 120 (H)
Label Size (mm) - Bottom Label	Minimum: 40 (W) x 28 (H) Maximum: 80 (W) x 100 (H)
Label Roll	190 mm outside diameter, 76 mm core, inside or outside wound
Label Application	11 finger touch positive applicator and bottom label by wipe on application
Print Method	direct thermal, 300 dpi or 12 dots per mm
Operating Speed	up to 65 packs per minute (speed is dependent on label length and printer information)
HDD Capacity	40 GB
Power Requirements	240 V AC 50 Hz single phase
Air Requirements	Minimum 4 bar at 50 to 300 litres per minute external clean, dry air
IP Protection	Console: IP65 Labeller: IP43 Conveyor: IP65
Operating Temperature	0 to +30 degrees Celsius
Operating Humidity	15 to 85% RH



Optional Top & Bottom Variant

Specifications may change without notice